

ONTARIO HOSE

SPECIALTIES LIMITED

2021 CATALOGUE



Spécialité Boyaux Québec
Quebec Hose Specialties

Division de / of ONTARIOHOSE Specialties LTD.



Maritime Hose
Specialties

DRY BULK TRUCKS

HOSE PARTS

ACCESSORIES

VALVES

COUPLINGS

HOSE
ASSEMBLIES

WWW.ONTARIOHOSE.COM 1-877-668-4673

MISSISSAUGA | STONEY CREEK | SARNIA | KINGSTON | QUEBEC | NOVA SCOTIA



Mississauga | Stoney Creek | Corunna | Kingston | Quebec | Nova Scotia

ONTARIO HOSE

SPECIALTIES LIMITED



Spécialité Boyaux Québec
Quebec Hose Specialties

We are a leading supplier and distributor of top quality hoses, fittings and accessories to the tank truck, vacuum, petroleum, chemical, food, environmental and industrial markets. Industrial hose is one of the most overlooked necessities of the modern economy. Virtually every industry uses some type of hose. Tanker trucks, breweries and cement plants, for example, all require hose assemblies made to tight specifications and exacting, rigorous standards. Our company has filled this market niche for many years, accumulating loyal clients. We also offer complete hose testing and repair services.

Found in 1973, Ontario Hose Specialties Limited has grown from a one man operation to a well-established six-branch supplier of industrial hose and hose products, primarily in Ontario, Quebec, and Eastern Canada.

Our goals are to help and achieve **SAFETY FIRST**:

- **No Spills**
- **No Personal Injury**
- **No Product Contamination**

Some of the most common problems in the hose industry result from improper hose coupling selection, failure to correctly inspect and test hose assemblies, improper cleaning, practices and hose assembly storage techniques.

In turn, these situations can lead to material leakage, spraying, spattering, end blow-offs, explosions and other situations that result in serious personal injury and property damage, with proper training these situations can be avoided.

For over 40 years Ontario Hose has been fulfilling customers' needs for hose, fittings and accessories by offering solutions to achieve their goals through:

- Our highly trained staff
- Strict adherence to quality programs ISO, CRN, B620, CSA, NAHAD
- Innovative hose tracking, training and certification solutions

We look forward to serving all your requirements and achieving your business objectives.



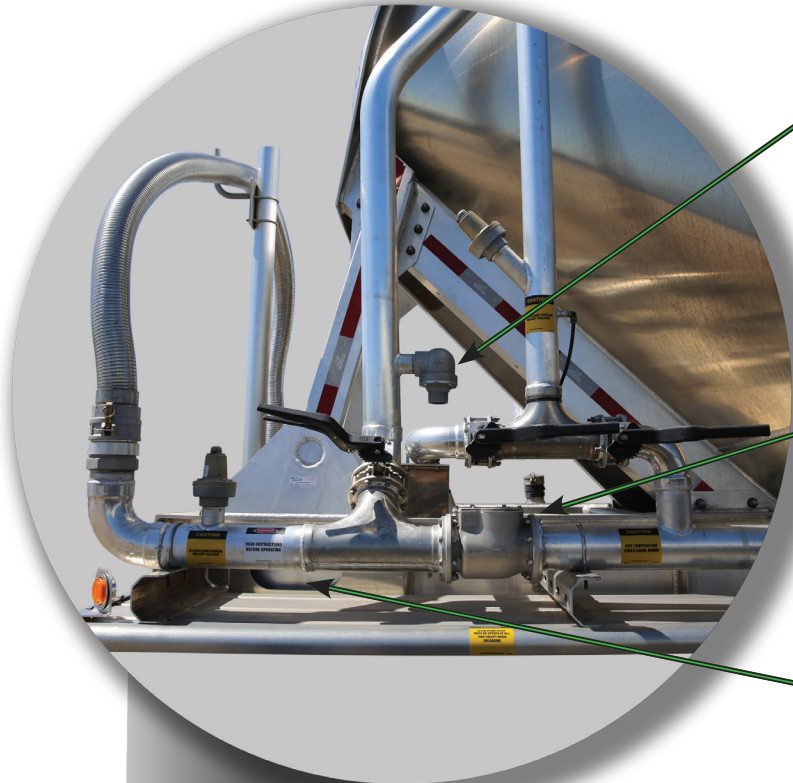
Table Of Contents

	Page:
Dry Bulk Truck Diagram	4-5
Air Pressure Relief Valves	6-8
Swing Check Valves	9-10
Butterfly Valves & Extensions	11-14
Bottom Drop & Straight Hopper T's	15-16
Tube Doors	16
Bauer Couplings	17
Compression Couplings	18
Fluidizers / Aeration Systems	19-21
Filter Systems	22

	Page:
Grooved Pipe Couplings	23-25
Manhole & Spare Parts	26-27
Camlock & Groove Fittings	28-34
NPT Fittings - KC Nipples	35
Hose Assemblies	36
Bulk Hose	37
Clamps	37-38
Gauges	39
Safety Equipment & Accessories	40-41
HoseTracker	41

Dry Bulk Products

Ontario Hose products are designed for use with bulk trailers and truck blowers for the pneumatic transfer of dry bulk commodities such as powders, grains and plastic pellets. Other industrial applications are possible where pneumatic control of air or dry products is required



Air and Vacuum Relief Valves
Page: 6-8

Three different models of Air and Vacuum Relief Valves are shown. The first is a large, cylindrical valve with a flange. The second is a smaller, more compact valve. The third is a larger, more complex valve with a flange and a handle.

Swing Check Valves
Page: 9 - 10

Three different models of Swing Check Valves are shown. They are cylindrical valves with flanges on both ends, designed to allow flow in one direction only.

Filter Systems
Page: 22

Two different models of Filter Systems are shown. They are cylindrical components with flanges, used to filter out contaminants from the air or product flow.

Gauges
Page: 39

Two different models of Gauges are shown. They are circular pressure gauges with white faces and black markings, used for monitoring system pressure.

Fluidizers
Page: 19-21

Various models of Fluidizers are shown, including a blue conical fluidizer, a yellow cylindrical fluidizer, and several other metal components used for fluidizing dry bulk materials.

Butterfly Valves and Hopper Tees
Page: 11-16

Various models of Butterfly Valves and Hopper Tees are shown. These include a large red butterfly valve, several hopper tees, and other specialized valves for bulk material handling.

**Manholes &
Spare Parts**
Page: 26-27



Tube Doors
Page: 16



Hose Assemblies
Page: 36



Bauer Fittings
Page: 17



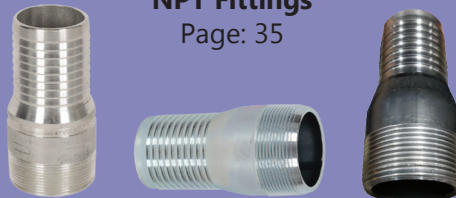
Couplings
Page: 28-34



Safety Equipment
Page: 40-43



NPT Fittings
Page: 35



Air Pressure Relief Valves

- Aluminum cowl with Bayloc body eliminates thread galling
- Bronze poppet valve
- Silicone diaphragm
- Cup seal installed to deter unauthorized tampering

Fixed Pressure Setting Valves

Air Relief Valve Fixed Pressure Female NPT



Part #	Valve Connection	Available Factory Set Pressure Range (PSI)
2180-15	2" NPTF air relief valve	15
2180-18	2" NPTF air relief valve	18

Air Relief Valve Fixed Pressure Cam & Groove



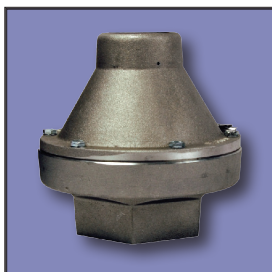
Part #	Valve Connection	Available Factory Set Pressure Range (PSI)
2180B-15	2" cam and groove adapter	15

Air Relief Valve Fixed Pressure Grooved



Part #	Valve Connection	Available Factory Set Pressure Range (PSI)
2180V-15	2" grooved	15

Air Relief Valve Fixed Pressure Female NPT



Part #	Valve Connection	Available Factory Set Pressure Range (PSI)
3180-xx	3" female NPT	4 to 30



Adjustable Pressure Setting Valves

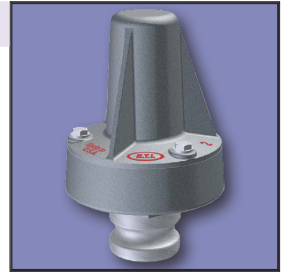
Part #	Inlet
BTRV-2150-#-X	2" Female Thread

Add required pressure setting & (T)ank or (B)lower
eg: BTRV-2550-15-T is a 15psi Tank Valve

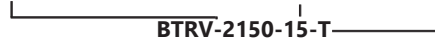


Part #	Inlet
BTRV-2550-#-X	2" Coupler

Add required pressure setting & (T)ank or (B)lower
eg: BTRV-2550-15-T is a 15psi Tank Valve



Part Number - Pressure Setting (PSI) - (T)ank or (B)lower



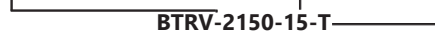
Fixed Pressure Setting Valves

Part #	Inlet
BTRV-2650-#-X	2" Male Coupler

Add required pressure setting & (T)ank or (B)lower
eg: BTRV-2550-15-T is a 15psi Tank Valve



Part Number - Pressure Setting (PSI) - (T)ank or (B)lower



Part #	Inlet
BTRV-2250-#-X	2" Female Thread

Add required pressure setting & (T)ank or (B)lower
eg: BTRV-2550-15-T is a 15psi Tank Valve



Air Pressure Relief Valves

PVC Coated Lanyards

Part #	Description
CAL15	15" long PVC coated carbon steel cable, with aluminum crimp sleeves. One end is factory crimped the other end is un-crimped for field inspection.



Vacuum Relief Valves

- Designed specifically for use on trailer tanks containing dry bulk products
- Available with a variety of vacuum settings

Dixon - Vacuum Relief Valves

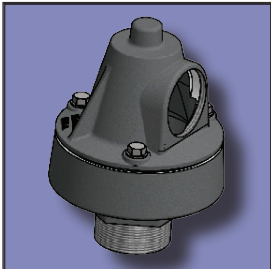


Part #	Description	Valve Inlet (Atmosphere)	Available Factory Set Vacuum Range (Hg)	Set Pressure Tolerance (PSI)	Relieving Capacity (SCFM)
2120-XX	2" male NPT outlet (tank connection)	2" male NPT inlet	5 to 24	+/- 0.5 HG	280 to 600

Dixon - Air Relief Valve Settings Pressure Relief Valves Minimum and Maximum Settings

Valve Series	Factory Settings	
	Min. Setting (PSI)	Max. Setting (PSI)
2180	2	25

All-in-One Vacuum Relief Valve



Part #	Description	Available Factory Set Vacuum Range (Hg)	Set Pressure Tolerance (PSI)
BTVB-2000-15	2" male NPT thread	13	15
BTVB-2000-18	2" male NPT thread	13	18

Vacuum Relief Valves



Swing Check Valves

- Often used on both the blower and trailer, designed to prevent product back flow if a product line should become plugged.
- Choice of seals: metal-to-metal, Buna, or silicone

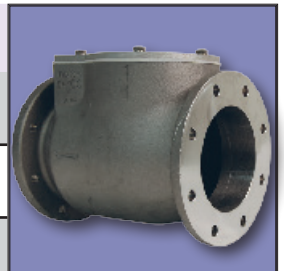
Bayco High Flow Series

Part #	Connection Type	Seal Type	Flapper Return Springs	Overall Length
3020SQ	2" square TTMA flange	White EPDM seal	Yes	5 1/8"
3030SQ	3" square TTMA flange	White EPDM seal	Yes	6 1/8"
3030SQ-SSP	3" square TTMA flange	White silicone seal	Yes	6 7/8"



Bayco High Flow Series

Part #	Connection Type	Seal Type	Flapper Return Springs	Overall Length
3030RD-SSP	3" round TTMA flange	White silicone seal	Yes	6 7/8"
3030RD	3" round TTMA flange	White EPDM seals	Yes	6 7/8"
4040RD	4" round TTMA flange	White EPDM seal	Yes	9"



Optima Check Valve

Part #	Description
	4" Check Valve Assembly Silicone Seal
BTCV4012	Without Spring
BTCV4022	With Spring



Optima Check Valve

Part #	Description
	3" Check Valve Assembly Silicone Seal, 8 Bolt TTMA Flange
BTCV3022FLG8	3" Check Valve Assembly 8 Bolt TTMA Flange, With Spring



Optima Check Valve



Part #	Description
	3" Check Valve NPT Threaded Assembly Silicone Seal
BTCV3012T	NPT Threaded / Without Spring
BTCV3022T	NPT Threaded / With Spring

Optima Check Valve



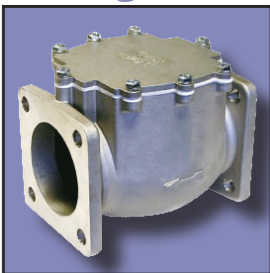
Part #	Description
	4" Blower Check Valve Assembly
BTCV4090	4" Blower Check Valve Assembly With Spring

Check Valve



Solimar Pneumatics 3" Check Valve is engineered to meet or exceed all requirements for unloading dry bulk products. Solimar's Check Valve offers significant cost and quality improvements over the older style valves to assure smooth and positive operation.

Swing Check Valve



Part #	Description
VC3022	3" Aluminum Swing Check Valve, Silicone Poppet, White Neoprene Gasket W/ Spring



Butterfly Valves & Extensions

- This economical, resilient seat valve is available in a wide variety of high quality materials including FDA approved blends and components for High Abrasion applications
- The primary seal is the interference fit between the disc hub and the seat flat. The secondary seal is the interference fit between the stem and seat stem hole.

Allo Maxx Disc & MaxxLife Seat

Part #	Description
2B-795-501	2" Black Maxx Body, Allo Disc & MaxxLife Seat
3B-795-501	3" Black Maxx Body, Allo Disc & MaxxLife Seat
4B-795-501	4" Black Maxx Body, Allo Disc & MaxxLife Seat
5B-795-501	5" Black Maxx Body, Allo Disc & MaxxLife Seat
6B-795-501	6" Black Maxx Body, Allo Disc & MaxxLife Seat



Stainless Disc & MaxxLife Seat

Part #	Description
2B-790-501	2" Black Maxx Body, Stainless Disc & MaxxLife Seat
3B-790-501	3" Black Maxx Body, Stainless Disc & MaxxLife Seat
4B-790-501	4" Black Maxx Body, Stainless Disc & MaxxLife Seat
5B-790-501	5" Black Maxx Body, Stainless Disc & MaxxLife Seat
6B-790-501	6" Black Maxx Body, Stainless Disc & MaxxLife Seat



Ductile Disc & MaxxLife Seat

Part #	Description
2B-600-500	2" Black Maxx Body, Ductile Disc & MaxxLife Seat
3B-600-500	3" Black Maxx Body, Ductile Disc & MaxxLife Seat
4B-600-500	4" Black Maxx Body, Ductile Disc & MaxxLife Seat
5B-600-500	5" Black Maxx Body, Ductile Disc & MaxxLife Seat
6B-600-500	6" Black Maxx Body, Ductile Disc & MaxxLife Seat



MAXXLife Butterfly Valve - Allo Disc



Part #	Description
2-795-501	2" Butterfly Valve - Allo Disc / MAXX Temp White Rubber
3-795-501	3" Butterfly Valve - Allo Disc / MAXX Temp White Rubber
4-795-501	4" Butterfly Valve - Allo Disc / MAXX Temp White Rubber
5-795-501	5" Butterfly Valve - Allo Disc / MAXX Temp White Rubber
6-795-501	6" Butterfly Valve - Allo Disc / MAXX Temp White Rubber

MAXXLife Butterfly Valve - Stainless Disc



Part #	Description
2-790-501	2" Butterfly Valve - Stainless Disc / MAXX Temp White Rubber
3-790-501	3" Butterfly Valve - Stainless Disc / MAXX Temp White Rubber
4-790-501	4" Butterfly Valve - Stainless Disc / MAXX Temp White Rubber
5-790-501	5" Butterfly Valve - Stainless Disc / MAXX Temp White Rubber
6-790-501	6" Butterfly Valve - Stainless Disc / MAXX Temp White Rubber

MAXXLife Butterfly Valve - Ductile Disc



Part #	Description
2-600-500	2" Butterfly Valve - Ductile Disc / MAXX Temp Black Rubber
3-600-500	3" Butterfly Valve - Ductile Disc / MAXX Temp Black Rubber
4-600-500	4" Butterfly Valve - Ductile Disc / MAXX Temp Black Rubber
5-600-500	5" Butterfly Valve - Ductile Disc / MAXX Temp Black Rubber
6-600-500	6" Butterfly Valve - Ductile Disc / MAXX Temp Black Rubber

Butterfly Valve - 400 Series



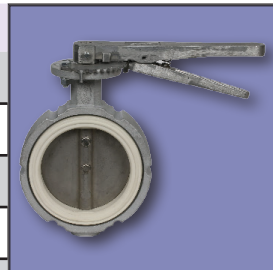
Part #	Description
2400002500	2" Series 400 Ultraflo Butterfly Valve C/W Alum Body, Buna Seat, 316SS disc and 17/4SS stem - Less handle
3400002500	3" Series 400 Ultraflo Butterfly Valve C/W Alum Body, Buna Seat, 316SS disc and 17/4SS stem - Less handle
4400001516	4" 400AL body EPDM Bk Ultraflo BF valve - Less handle
5400001516	5" Ultraflo 400AL body EPDM Bk BF valve - C/W handle
6400003501	6" 400AL body W/Seat/SS Disc B/F Valve Only - Less handle and notch plate





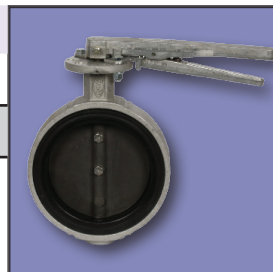
Butterfly Valve - 780 Series

Part #	Description
2-780-003501	2" Series 780 Butterfly Valve AL body, White Seat and SS disc
3-780-003501	3" Series 780 Butterfly Valve AL body, White Seat and SS disc
4-780-003501	4" Series 780 Butterfly Valve AL body, White Seat and SS disc
5-780-003501	5" Series 780 Butterfly Valve AL body, White Seat and SS disc
6-780-003501	6" Series 780 Butterfly Valve AL body, White Seat and SS disc



Butterfly Valve - 400 Series - Ductile Disc

Part #	Size	Part #	Size
2400001516	2	5400001516	5
3400001516	3	6400001516	6
4400001516	4	8400001516	8



Extensions

Butterfly Valve Extension - 380/780 Series



Part #	Description
SE02T-X18	18" Handle extension for 4" - 6" series 380/780 butterfly valve
SE02T-X24	24" Handle extension for 4" - 6" series 380/780 butterfly valve
SE02T-X28	28" Extension handle kit for B/V
SE02T-X36	36" Handle extension for 4" - 6" series 380/780 butterfly valve
Part #	Description
300-206-23-10	2" - 3" Alum handle 780 series - Ultraflo
300-206-46-10	4" - 6" Alum handle 780 series - Ultraflo

Butterfly Valve Extension - Allo Disc



Part #	Description
5B-795-501-EXT20"	5" Black Maxx Body, Allo Disc & MaxxLife Seat W/ 20" EXT
5B-795-501-EXT24"	5" Black Maxx Body, Allo Disc & MaxxLife Seat W/ 24" EXT
5B-795-501-EXT30"	5" Black Maxx Body, Allo Disc & MaxxLife Seat W/ 30" EXT
Part #	Description
6B-795-501-EXT20"	6" Black Maxx Body, Allo Disc & MaxxLife Seat W/ 20" EXT
6B-795-501-EXT24"	6" Black Maxx Body, Allo Disc & MaxxLife Seat W/ 24" EXT
6B-795-501-EXT30"	6" Black Maxx Body, Allo Disc & MaxxLife Seat W/ 30" EXT

Butterfly Valve Extension - Stainless Disc



Part #	Description
6B-790-501-EXT20"	6" Black Maxx Body, Stainless Disc & MaxxLife Seat W/ 20" EXT
6B-790-501-EXT24"	6" Black Maxx Body, Stainless Disc & MaxxLife Seat W/ 24" EXT
6B-790-501-EXT30"	6" Black Maxx Body, Stainless Disc & MaxxLife Seat W/ 30" EXT

Butterfly Valve Extension - Ductile Disc



Part #	Description
6B-600-500-EXT20"	6" Black Maxx Body, Ductile Disc & MaxxLife Seat W/ 20" EXT
6B-600-500-EXT24"	6" Black Maxx Body, Ductile Disc & MaxxLife Seat W/ 24" EXT
6B-600-500-EXT30"	6" Black Maxx Body, Ductile Disc & MaxxLife Seat W/ 30" EXT

Note: All BTI Butterfly Valve Extensions comes with the valve, U-Bolt and Handle as a full assembly.



Bottom Drop & Straight Hopper Tee's

Straight and bottom drop tees are used at the base of each dry bulk tank hopper. With straight tees the dry bulk product is unloaded utilizing the blower generated pneumatic flow through the straight tee and air pressure on top of the hopper.

SandHog Hopper Tee - Straight

Part #	Description
BT-500-D	5" SandHog Straight Tee
BT-600-D	6" SandHog Straight Tee



SandHog Hopper Tee - Bottom Drop



Part #	Description
BT-510-D	5" Bottom Drop SandHog Tee
BT-610-D	6" Bottom Drop SandHog Tee

Straight Tees

Part #	Description
BT-500-A	5" Aluminum Tee
BT-600-A	6" Aluminum Tee



Bottom Drop Tees



Part #	Description
BT-510-A	5" Bottom Drop Aluminum Tee
BT-610-A	6" Bottom Drop Aluminum Tee

Bottom Drop Door

Part #	Description
BT-510-A-DOOR-F	5" Bottom Drop Door Assembly Aluminum



Bottom Drop & Straight Hopper Tee's



Bottom Drop Tees



Part #	Description
6X4-RX TEE	6" x 4" Tee - RX
6X4-S	6" x 4" Alum hopper tee

Straight Tees



Part #	Description
500400	Bottom Drop Tee Straight

Tube Doors

Dixon - Tube Door



Part #	Description
TDF6	Used for 6" Hose Tube
TDF7	Used for 7" Hose Tube
TDF8	Used for 8" Hose Tube

Latch Bushing

Part #	Description
HTD-LB	Hose Tube Door Latch Bushing



Pelican - Tube Door



Part #	Description
HTD-0600-AL	6" Hose Tube Door Assembly
HTD-0700-AL	7" Hose Tube Door Assembly (includes Latch Kit)
HTD-0800-AL	8" Hose Tube Door Assembly (includes Latch Kit)
HTD-1000-AL	10" Hose Tube Door Assembly

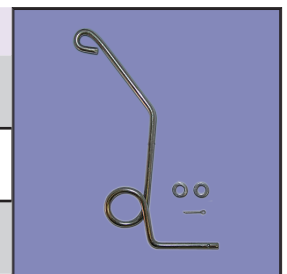
Tube Door End Cap



Part #	Description
HTEC-0600-AL	Hose Tube End Cap 6"
HTEC-0700-AL	Hose Tube End Cap 7"
HTEC-0800-AL	Hose Tube End Cap 8"
HTEC-1000-AL	Hose Tube End Cap 10"

Latch Kit

Part #	Description
HTD-LK-6	Hose Tube Door Latch Kit 6"
HTD-LK-8	Hose Tube Door Latch Kit 8"
HTD-LK-10	Hose Tube Door Latch Kit 10"



Tube Doors



Bauer Couplings

Lever Closing Ring

Size	Plated	Unplated
2	S2PL50	S2BK50
2 1/2	S2PL76	S2BK76
3	S2PL89	S2BK89
4	S2PL108	S2BK108
5	S2PL133	S2BK133
6	S2PL159	S2BK159
8	S2PL194	S2BK194



Ball with Shank



Size	Plated	Unplated
4	S77PL108	S77BK108
5	S77PL133	S77BK133
6	S77PL159	S77BK159
8	S77PL194	S77BK194

Socket with Shank

Size	Plated	Unplated
4	S78PL108	S78BK108
5	S78PL133	S78BK133
6	S78PL159	S78BK159
8	S78PL194	S78BK194



Balls



Size	Plated	Unplated
2	S1PL50	S1BK50
2 1/2	S1PL76	S1BK76
3	S1PL89	S1BK89
4	S1PL108	S1BK108
5	S1PL133	S1BK133
6	S1PL159	S1BK159
8	S1PL194	S1BK194

End Cap

Size	Plated
2	S8PL50
2 1/2	S8PL76
3	S8PL89
4	S8PL108
5	S8PL133
6	S8PL159
8	S8PL194



Socket



Size	Plated	Unplated
2	S3PL50	S3BK50
2 1/2	S3PL76	S3BK76
3	S3PL89	S3BK89
4	S3PL108	S3BK108
5	S3PL133	S3BK133
6	S3PL159	S3BK159
8	S3PL194	S3BK194

Rubber Seal

Size	Plated
2	S4GK50
2 1/2	S4GK76
3	S4GK89
4	S4GK108
5	S4GK133
6	S4GK159
8	S4GK194



The Right Connection®

Compression Couplings

Coupling Material

- Made of heavy gauge zinc plated steel
- Also available in aluminum or stainless steel on special request

Gasket Material

- Gasket is black or white rubber neoprene, please specify by adding a B for black or W for white to the part number, i.e. 2 1/4-3COD-W

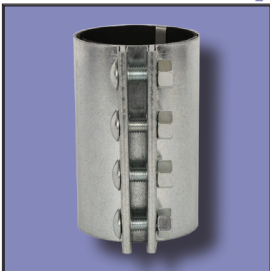
*Static grounding strip available on request

Morris Couplings - White Gasket



Size (in.)	Type	O.D. (in.)	Length (in.)	# of Bolts	Size of Bolts	Weight (lbs./Ft.)	White Part #
3	Pipe	3.500	4	2	5/8 x 2	3.4	MC300WH2C
3	Pipe	3.500	6	3	5/8 x 2	5.1	MC300WH3C
3	Pipe	3.500	8	4	5/8 x 2	6.6	MC300WH4C
4	Pipe	3.500	4	2	5/8 x 2	3.8	MC400WH2C
4	Pipe	3.500	6	3	5/8 x 2	5.5	MC400WH3C
4	Pipe	3.500	8	4	5/8 x 2	7.7	MC400WH4C
5	Pipe	3.500	4	2	5/8 x 2	4.6	MC500WH2C
5	Pipe	3.500	6	3	5/8 x 2	6.8	MC500WH3C
5	Pipe	3.500	8	4	5/8 x 2	8.8	MC500WH4C
6	Pipe	3.500	6	3	5/8 x 2	7.8	MC600WH3C
6	Pipe	3.500	8	4	5/8 x 2	10.4	MC600WH4C
6	Pipe	3.500	10	5	5/8 x 2	14.3	MC600WH5C

Morris Couplings - Black Gasket



Size (in.)	Type	O.D. (in.)	Length (in.)	# of Bolts	Size of Bolts	Weight (lbs./Ft.)	Black Part #
3	Pipe	3.500	4	2	5/8 x 2	3.4	MC300BK2C
3	Pipe	3.500	6	3	5/8 x 2	5.1	MC300BK3C
3	Pipe	3.500	8	4	5/8 x 2	6.6	MC300BK4C
4	Pipe	3.500	4	2	5/8 x 2	3.8	MC400BK2C
4	Pipe	3.500	6	3	5/8 x 2	5.5	MC400BK3C
4	Pipe	3.500	8	4	5/8 x 2	7.7	MC400BK4C
5	Pipe	3.500	4	2	5/8 x 2	4.6	MC500BK2C
5	Pipe	3.500	6	3	5/8 x 2	6.8	MC500BK3C
5	Pipe	3.500	8	4	5/8 x 2	8.8	MC500BK4C
6	Pipe	3.500	6	3	5/8 x 2	7.8	MC600BK3C
6	Pipe	3.500	8	4	5/8 x 2	10.4	MC600BK4C
6	Pipe	3.500	10	5	5/8 x 2	14.3	MC600BK5C



Fluidizers / Aeration Systems

Aerator Assemblies



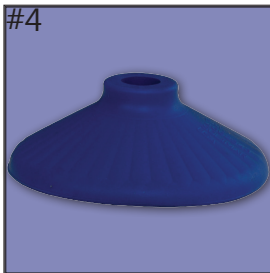
Manifolds	
Part #	Description
4121	One Port, Grey



Manifolds	
Part #	Description
4122	Two Port, Grey



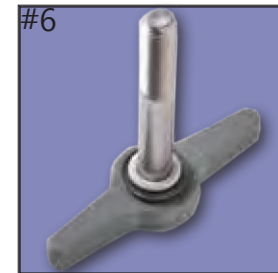
Manifolds	
Part #	Description
4123	Three Port, Grey



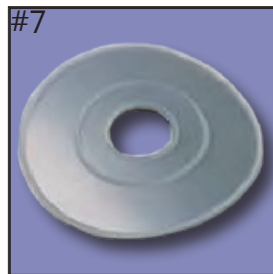
Fluidizers	
Part #	Description
4124	Blue Disk



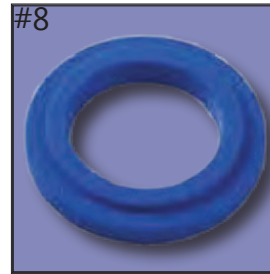
Stems	
Part #	Description
4125	Grey Stem



Tee Handles	
Part #	Description
4129	Assembly



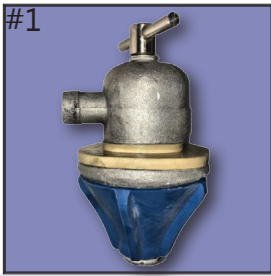
Tee Handles	
Part #	Description
4126B	Hopper Saver, Stainless Steel



Tee Handles	
Part #	Description
4127	Gasket, Blue

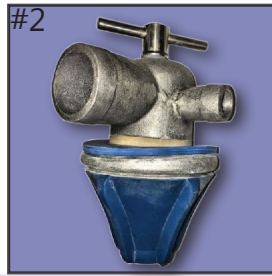


Aerations Parts



Manifolds

Part #	Description
901617	1-Port Assembly



Manifolds

Part #	Description
901616	3-Port Assembly



Manifolds

Part #	Description
910210	Aluminum Cone



Manifolds

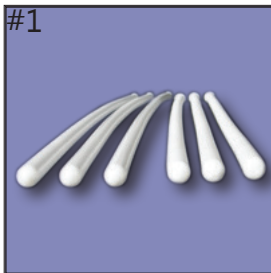
Part #	Description
315724	1-Port Manifold



Manifolds

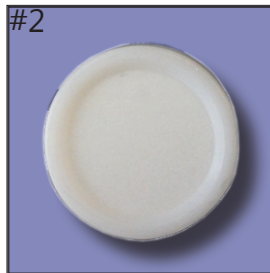
Part #	Description
315730	3-Port Manifold

Filters & Spare Parts



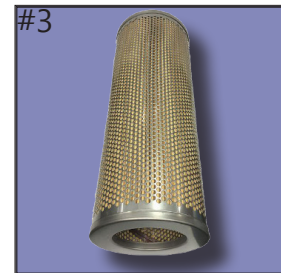
Butler Manhole Parts

Part #	Description
6030	36" Filter Tube



Butler Manhole Parts

Part #	Description
6035	Grommet, White

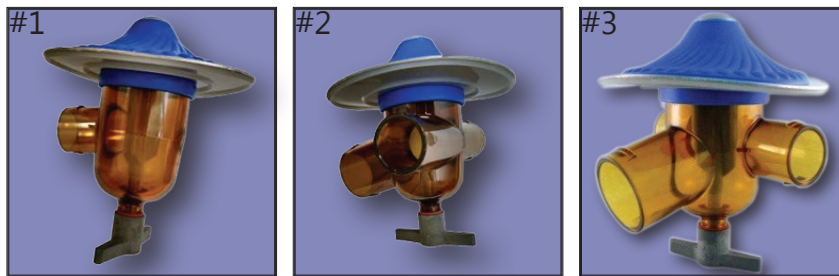


Pneumatic Filter System

Part #	Description
PC5001	Max Temp: 500°F (204°C), Weight: 4.8 lb



Spin Flow Aerator



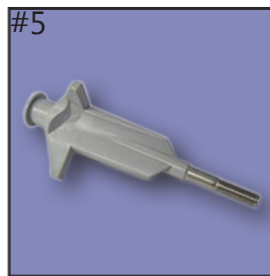
Manifolds

	Part #	Description
1.	A201C	1-Port Complete, Assembly Clear & Wearplate
2.	A202C	2-Port Complete, Assembly Clear & Wearplate
3.	A203C	3-Port Complete, Assembly Clear & Wearplate



Fluidizers

Part #	Description
A204	Rubber Blue



Stems

Part #	Description
A205	Stem



Tee Handles

Part #	Description
A207	Wear Plate



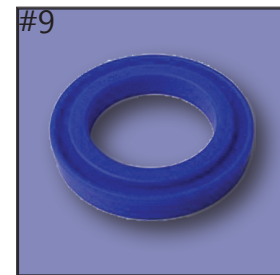
Tee Handles

Part #	Description
A210	Tee Handle



Tee Handles

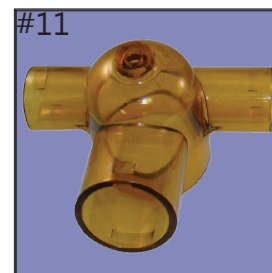
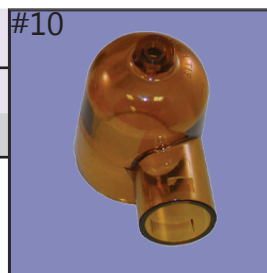
Part #	Description
A215	Tee Handle Gasket



Housing

Part #	Description
A208	Port Housing Gasket

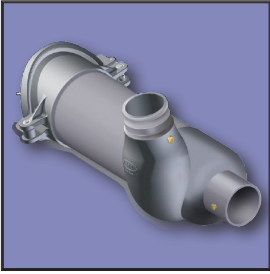
Housing	
Part #	Description
A211C	1-Port Clear Housing
A213C	3-Port Clear Housing



Bulk Tank Inc.

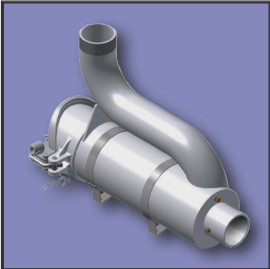
Filter Systems

SpinFlow Filter Silencer



Part #	Description
BTA-CT-SILENCER	Filter Silencer - Groove to Plain Assembly
BTA-CT-MTMT	Filter Silencer - Male Thread to Male Thread Assembly
BTA-CT-MTPL	Filter Silencer - Male Thread to Plain Assembly
BTA-CT-PLPL	Filter Silencer - Plain to Plain Assembly

SpinFlow Front Mount



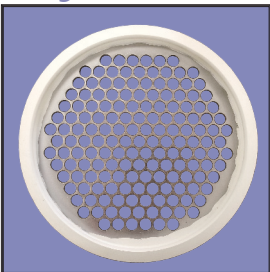
Part #	Description
BTA-FM-PLPL	Front Mount - Plain to Plain Assembly
BTA-FM-MTMT	Front Mount - Male Thread to Male Thread Assembly
BTA-FM-GRPL	Front Mount - Groove to Plain Assembly
BTA-FM-MTCL	Front Mount - Male Thread to Cam Assembly

SpinFlow Standard



Part #	Description
BTA-SL-MTMT	Standard Trailer Mount - Male Thread to Male Thread Assembly
BTA-SL-MTPL	Standard Trailer Mount - Male Thread to Plain Assembly
BTA-SL-PLPL	Standard Trailer Mount - Plain to Plain Assembly
BTA-SL-MTCL	Standard Trailer Mount - Male Thread to Cam Assembly

Dry Bulk Filter Screen



Part #	Size
BTF-GSKT-6-1/4	1/4"
BTF-GSKT-6-3/8	3/8"
BTF-GSKT-6-5/16	5/16"



Grooved Pipe Couplings

Snap Joint - Toggle Style 28

Size	EPDM (water)	Size	Buna (fuel)	Size	Viton (chemical fuels)	Size	White (food)
2	VC78E200	2	VC78B200	2	VC78V200	2	VC78W200
2 1/2	VC78E250	2 1/2	VC78B250	2 1/2	VC78V250	2 1/2	VC78W250
3	VC78E300	3	VC78B300	3	VC78V300	3	VC78W300
4	VC78E400	4	VC78B400	4	VC78V400	4	VC78W400
6	VC78E600	6	VC78B600	6	VC78V600	6	VC78W600



Aluminum

I.D. (in.)	O.D. (in.)	Material	Weight (lbs)	Pipe Connection	Part #
3	3.500	Aluminum Clamp & SS Hardware	1.75	Groove to Groove	632GGW300
4	4.500	Aluminum Clamp & SS Hardware	2.6	Groove to Groove	635GGW400
4	4.500	Aluminum Clamp & SS Hardware	2.8	Groove to Plain	635GPW400
4	4.500	Aluminum Clamp & SS Hardware	2.8	Plain to Plain	635PPW400
5	5.500	Aluminum Clamp & SS Hardware	3.5	Groove to Groove	637GGW500
6	6.625	Aluminum Clamp & SS Hardware	4.0	Groove to Groove	639GGW600



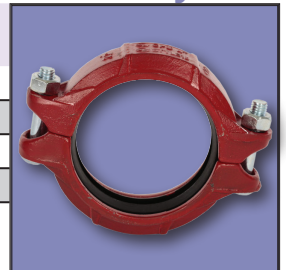
Plastic

I.D. (in.)	O.D. (in.)	Material	Weight (lbs)	Pipe Connection	Part #
4	4.500	Engineered Polymer & SS Hardware	1.6	Grooved to Grooved Pipe	735GGW400
4	4.500	Engineered Polymer & SS Hardware	1.8	Plain to Plain Pipe	735PPW400
4	4.500	Engineered Polymer & SS Hardware	1.9	Grooved to Plain Pipe	735GPW400



Flexible - Bolted Style 75

Size	EPDM (water)	Size	Buna (fuel)	Size	Viton (chemical fuels)	Size	White (food)
2	VC75E200	2	VC75B200	2	VC75V200	2	VC75W200
2 1/2	VC75E250	2 1/2	VC75B250	2 1/2	VC75V250	2 1/2	VC75W250
3	VC75E300	3	VC75B300	3	VC75V300	3	VC75W300
4	VC75E400	4	VC75B400	4	VC75V400	4	VC75W400
6	VC75E600	6	VC75B600	6	VC75V600	6	VC75W600



The Right Connection*

BlackMaxx All-in-One Coupler



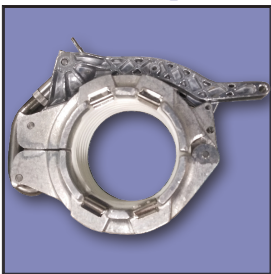
Size (in.)	Description	Part #
4"	Black Maxx Coupler A1 with Solid Gasket - Cam Handle	BTC-BM-A1-4
4"	Black Maxx Coupler A1 with Split Gasket - Cam Handle	BTC-BM-A1-4S

A1 Coupler Cam Handle



Size (in.)	Description	Part #
4"	Coupler - Groove to Groove - Cam Handle	BTC-GG-4
6"	Coupler - Groove to Groove - Cam Handle	BTC-GG-6
Size (in.)	Description	Part #
3"	Coupler A1 with Solid Gasket - Cam Handle	BTC-A1-3
4"	Coupler A1 with Solid Gasket - Cam Handle	BTC-A1-4
5"	Coupler A1 with Solid Gasket - Cam Handle	BTC-A1-5
6"	Coupler A1 with Solid Gasket - Cam Handle	BTC-A1-6

A1 Coupler Gasket Solid



Size (in.)	Description	Part #
3"	A1 Coupler Gasket - Solid	BTC-A1-GSKT-3
4"	A1 Coupler Gasket - Solid	BTC-A1-GSKT-3
5"	A1 Coupler Gasket - Solid	BTC-A1-GSKT-3

A1 Coupler Gasket Solid

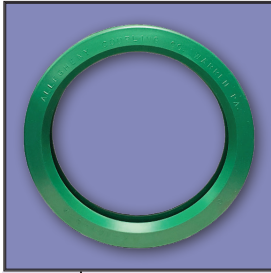


Size (in.)	Description	Part #
4"	Coupler - A1 with Solid Gasket - Bolt On Tee Handle	BTC-A1-4-B
4"	Coupler - A1 with Solid Gasket - Bolt On Tee Handle	BTC-A1-4-B

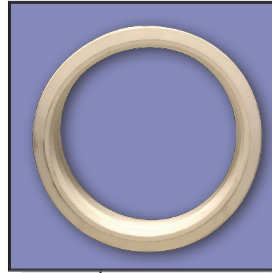


Bulk Tank Inc.

Replacement Gaskets for all Pipe Couplings

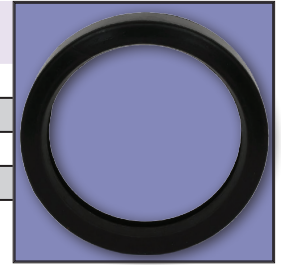


Size	Viton (chemical fuels)
2	G200VI
2 1/2	G250VI
3	G300VI
4	G400VI
6	G600VI



Size	White (food)
2	G200WBU
2 1/2	G250WBU
3	G300WBU
4	G400WBU
6	G600WBU

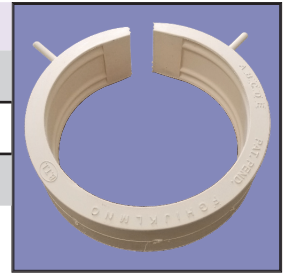
Size	EPDM (water)	Size	Buna (fuel)
2	G200VE	2	G200VB
2 1/2	G250VE	2 1/2	G250VB
3	G300VE	3	G300VB
4	G400VE	4	G400VB
6	G600VE	6	G600VB



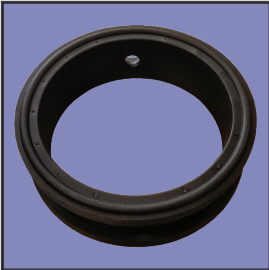
Size	White
3"	BTC-A1-GSKT-3
4"	BTC-A1-GSKT-4
5"	BTC-A1-GSKT-5

A1 Coupler Gasket - Split

Part #	Size
BTC-A1-GSKT-3	3"
BTC-A1-GSKT-4	4"
BTC-A1-GSKT-4S	4"
BTC-A1-GSKT-5	5"



Black Seat For Series 500



Part #	Size
BTC-GG-GSKT-4	4"
BTC-GG-GSKT-6	6"
Part #	Size
BTV-6-SEAT-500	6"
BTV-8-SEAT-500	8"

Composite Handle Snap On Lit

Part #	Size
HDL-HP-5C	2" - 6"



All Valves Steel Plate Kit

Part #	Size
SS-250-HP-KIT	2" - 6"



Valve Handle



Part #	Size
HD700-207-46-10	2" to 6"

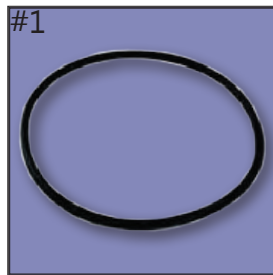
Grooved Pipe Couplings



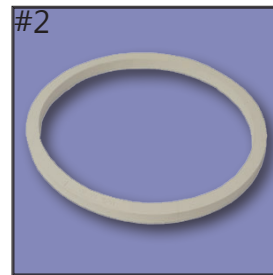
Bulk Tank Inc.

Manhole & Spare Parts

Manhole Gaskets

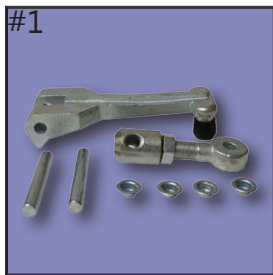


Gaskets	
Part #	Description
3543	Gasket, Black

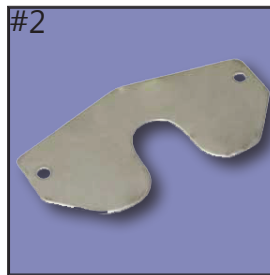


Gaskets	
Part #	Description
3570	Gasket, White

Manholes & Components



Gaskets	
Part #	Description
FRU-TKA8731	Manhole Latch Kit

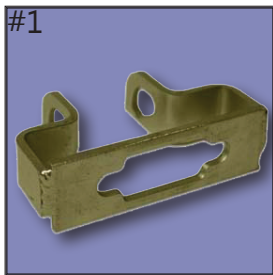


Gaskets	
Part #	Description
FRU-TKA8242A	S/S Wear Plate for Manhole Cover

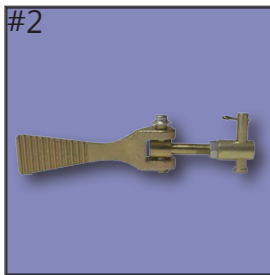


Gaskets	
Part #	Description
FRU-TKA5924F	Aluminum Manhole Cover

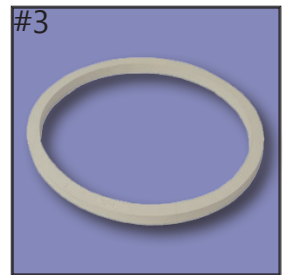
Knappco Manhole & Spare Parts



Butler Manhole Parts	
Part #	Description
KNA-3686	Safety Catch



Butler Manhole Parts	
Part #	Description
KNA-3519	LM Manhole Cam Lever Assy



Butler Manhole Parts	
Part #	Description
GSK-3523	White Dome Lid Gasket



Butler Manhole Parts	
Part #	Description
KNA-LM1110	20" Alum Manhole Assembly w/collar
KNA-3717	Manhole Lid Assembly



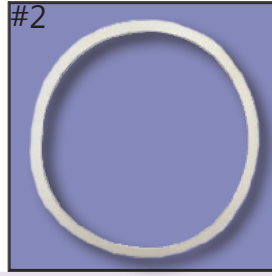
Manhole & Spare Parts

Butler Manhole & Spare Parts



Butler Manhole Parts

Part #	Description
A-901603	Gasket, Black



Butler Manhole Parts

Part #	Description
070099	Gasket, White



Butler Manhole Parts

Part #	Description
B-070096	Lever Arm



Butler Manhole Parts

Part #	Description
B-070097	Pivot Block



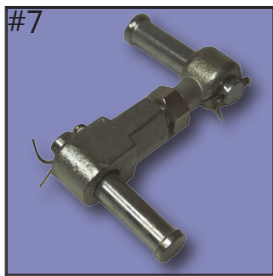
Butler Manhole Parts

Part #	Description
B-901546	Gasket, Retainer Lug



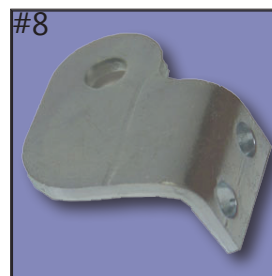
Butler Manhole Parts

Part #	Description
315294	Service Kit



Butler Manhole Parts

Part #	Description
BUT-315294	Service Kit



Butler Manhole Parts

Part #	Description
BUT-381572	Right Hand Hinge Bracket

Manhole Adjusters

Part #	Description
BTM-EA-HS-1	Heil Manhole Service Kit - SS
BTM-EA-KS-1	Knappco Manhole Service Kit - SS
BTM-EA-HE-1	Heil Manhole Service Kit - Nickel Plated
BTM-EA-KE-1	Knappco Manhole Service Kit - Nickel Plated



Camlock Gaskets



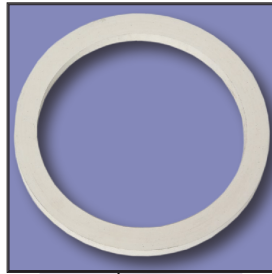
Size	Buna-N
2	G200BU
2 1/2	G250BU
3	G300BU
4	G400BU
6	G600BU
8	G800BU

Size	Neoprene
2	G200NE
2 1/2	G250NE
3	G300NE
4	G400NE
6	G600NE
8	G800NE

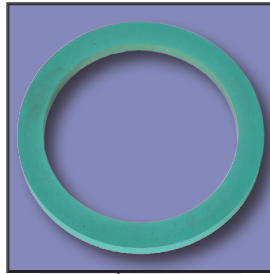
Size	Buna-N 5/16"
2	G200BUTHK
2 1/2	G250BUTHK
3	G300BUTHK
4	G400BUTHK
6	G600BUTHK
8	G800BUTHK

Size	Buna-N 1/8"
2	G200BUTN
2 1/2	G250BUTN
3	G300BUTN
4	G400BUTN
6	G600BUTN
8	G800BUTN

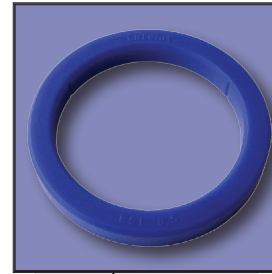
Size	Buna-N Oil Hot
2	G200BUH
2 1/2	G250BUH
3	G300BUH
4	G400BUH
6	G600BUH
8	G800BUH



Size	White Food
2	G200WBU
2 1/2	G250WBU
3	G300WBU
4	G400WBU
6	G600WBU
8	G800WBU



Size	Viton
2	G200VT
2 1/2	G250VT
3	G300VT
4	G400VT
6	G600VT
8	G800VT



Size	Silicone High Temp
2	SB06
3	SB07
4	SB08
5	SB09
6	SB10

Camlock & Groove Fittings

Domestic Fittings - Aluminum Couplings

A



Size	Aluminum
2	DAL200A
2 1/2	DAL250A
3	DAL300A
4	DAL400A
5	DAL500A
6	DAL600A
8	DAL800A

B



Size	Aluminum
2	DAL200B
2 1/2	DAL250B
3	DAL300B
4	DAL400B
5	DAL500B
6	DAL600B
8	DAL800B

C



Size	Aluminum
2	DAL200C
2 1/2	DAL250C
3	DAL300C
4	DAL400C
5	DAL500C
6	DAL600C
8	DAL800C

D



Size	Aluminum
2	DAL200D
2 1/2	DAL250D
3	DAL300D
4	DAL400D
5	DAL500D
6	DAL600D
8	DAL800D

E



Size	Aluminum
2	DAL200E
2 1/2	DAL250E
3	DAL300E
4	DAL400E
5	DAL500E
6	DAL600E
8	DAL800E

F



Size	Aluminum
2	DAL200F
2 1/2	DAL250F
3	DAL300F
4	DAL400F
5	DAL500F
6	DAL600F
8	DAL800F

DC



Size	Aluminum
2	DAL200DC
2 1/2	DAL250DC
3	DAL300DC
4	DAL400DC
5	DAL500DC
6	DAL600DC
8	DAL800DC

DP



Size	Aluminum
2	DAL200DP
2 1/2	DAL250DP
3	DAL300DP
4	DAL400DP
5	DAL500DP
6	DAL600DP
8	DAL800DP

Domestic Fittings - Polypropylene Couplings

A



Size	Polypropylene
1/2	-
3/4	DPP075A
1	DPP100A
1 1/4	DPP125A
1 1/2	DPP150A
2	DPP200A
2 1/2	-
3	DPP300A
4	DPP400A
5	-
6	-
8	-

B



Size	Polypropylene
1/2	-
3/4	DPP075B
1	DPP100B
1 1/4	DPP125B
1 1/2	DPP150B
2	DPP200B
2 1/2	-
3	DPP300B
4	DPP400B
5	-
6	-
8	-

C



Size	Polypropylene
1/2	-
3/4	DPP075C
1	DPP100C
1 1/4	DPP125C
1 1/2	DPP150C
2	DPP200C
2 1/2	-
3	DPP300C
4	DPP400C
5	-
6	-
8	-

D



Size	Polypropylene
1/2	-
3/4	DPP075D
1	DPP100D
1 1/4	DPP125D
1 1/2	DPP150D
2	DPP200D
2 1/2	-
3	DPP300D
4	DPP400D
5	-
6	-
8	-

E



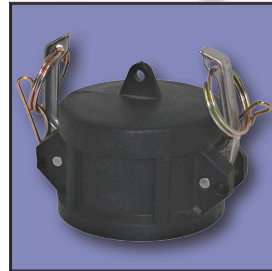
Size	Polypropylene
1/2	-
3/4	DPP075E
1	DPP100E
1 1/4	DPP125E
1 1/2	DPP150E
2	DPP200E
2 1/2	-
3	DPP300E
4	DPP400E
5	-
6	-
8	-

F



Size	Polypropylene
1/2	-
3/4	DPP075F
1	DPP100F
1 1/4	DPP125F
1 1/2	DPP150F
2	DPP200F
2 1/2	-
3	DPP300F
4	DPP400F
5	-
6	-
8	-

DC



Size	Polypropylene
1/2	-
3/4	DPP075DC
1	DPP100DC
1 1/4	DPP125DC
1 1/2	DPP150DC
2	DPP200DC
2 1/2	-
3	DPP300DC
4	DPP400DC
5	-
6	-
8	-

DP

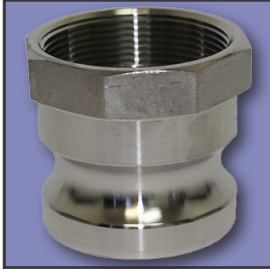


Size	Polypropylene
1/2	-
3/4	DPP075DP
1	DPP100D
1 1/4	DPP125DP
1 1/2	DPP150DP
2	DPP200DP
2 1/2	-
3	DPP300DP
4	DPP400DP
5	-
6	-
8	-

Camlock & Groove Fittings

Domestic Fittings - Stainless Steel Couplings

A



Size	Stainless Steel
1/2	DSS050A
3/4	DSS075A
1	DSS100A
1 1/4	DSS125A
1 1/2	DSS150A
2	DSS200A
2 1/2	DSS250A
3	DSS300A
4	DSS400A
5	DSS500A
6	DSS600A
8	DSS800A

B



Size	Stainless Steel
1/2	DSS050B
3/4	DSS075B
1	DSS100B
1 1/4	DSS125B
1 1/2	DSS150B
2	DSS200B
2 1/2	DSS250B
3	DSS300B
4	DSS400B
5	DSS500B
6	DSS600B
8	DSS800B

C



Size	Stainless Steel
1/2	DSS050C
3/4	DSS075C
1	DSS100C
1 1/4	DSS125C
1 1/2	DSS150C
2	DSS200C
2 1/2	DSS250C
3	DSS300C
4	DSS400C
5	DSS500C
6	DSS600C
8	DSS800C

D



Size	Stainless Steel
1/2	DSS050D
3/4	DSS075D
1	DSS100D
1 1/4	DSS125D
1 1/2	DSS150D
2	DSS200D
2 1/2	DSS250D
3	DSS300D
4	DSS400D
5	DSS500D
6	DSS600D
8	DSS800D

E



Size	Stainless Steel
1/2	DSS050E
3/4	DSS075E
1	DSS100E
1 1/4	DSS125E
1 1/2	DSS150E
2	DSS200E
2 1/2	DSS250E
3	DSS300E
4	DSS400E
5	DSS500E
6	DSS600E
8	DSS800E

F



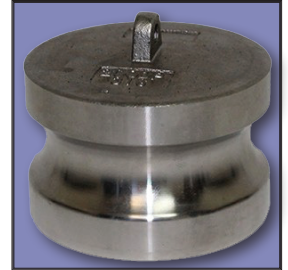
Size	Stainless Steel
1/2	DSS050F
3/4	DSS075F
1	DSS100F
1 1/4	DSS125F
1 1/2	DSS150F
2	DSS200F
2 1/2	DSS250F
3	DSS300F
4	DSS400F
5	DSS500F
6	DSS600F
8	DSS800F

DC



Size	Stainless Steel
1/2	DSS050DC
3/4	DSS075DC
1	DSS100DC
1 1/4	DSS125DC
1 1/2	DSS150DC
2	DSS200DC
2 1/2	DSS250DC
3	DSS300DC
4	DSS400DC
5	DSS500DC
6	DSS600DC
8	DSS800DC

DP



Size	Stainless Steel
1/2	DSS050DP
3/4	DSS075DP
1	DSS100DP
1 1/4	DSS125DP
1 1/2	DSS150DP
2	DSS200DP
2 1/2	DSS250DP
3	DSS300DP
4	DSS400DP
5	DSS500DP
6	DSS600DP
8	DSS800DP

Camlock & Groove Fittings

Domestic Fittings - Ductile Iron Couplings

A



Size	Ductile Iron
2	DDI200A
2 1/2	DDI250A
3	DDI350A
4	DDI400A
5	DDI500A
6	DDI600A
8	DDI800A

B



Size	Ductile Iron
2	DDI200B
2 1/2	DDI250B
3	DDI350B
4	DDI400B
5	DDI500B
6	DDI600B
8	DDI800B

C



Size	Ductile Iron
2	DDI200C
2 1/2	DDI250C
3	DDI350C
4	DDI400C
5	DDI500C
6	DDI600C
8	DDI800C

D



Size	Ductile Iron
2	DDI200D
2 1/2	DDI250D
3	DDI350D
4	DDI400D
5	DDI500D
6	DDI600D
8	DDI800D

E



Size	Ductile Iron
2	DDI200E
2 1/2	DDI250E
3	DDI350E
4	DDI400E
5	DDI500E
6	DDI600E
8	DDI800E

F



Size	Ductile Iron
2	DDI200F
2 1/2	DDI250F
3	DDI350F
4	DDI400F
5	DDI500F
6	DDI600F
8	DDI800F

DC



Size	Ductile Iron
2	DDI200DC
2 1/2	DDI250DC
3	DDI350DC
4	DDI400DC
5	DDI500DC
6	DDI600DC
8	DDI800DC

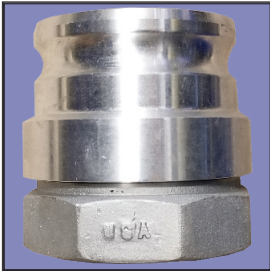
DP



Size	Ductile Iron
2	DDI200DP
2 1/2	DDI250DP
3	DDI350DP
4	DDI400DP
5	DDI500DP
6	DDI600DP
8	DDI800DP

Domestic Spool Couplers

Part A Adapter - Swivel



Part # (Aluminum)	Size
DAL300ASW	3"
DAL400ASW	4"
DAL600ASW	6"



Part # (Aluminum)	Coupler Size	Coupler Size
DAL2020BB	2	2
DAL3030BB	3	3
DAL3020BB	3	2
DAL3040BB	3	4
DAL4040BB	4	4
DAL6060BB	6	6



Part # (Stainless Steel)	Coupler Size	Coupler Size
DSS2020BB	2	2
DSS3030BB	3	3
DSS3020BB	3	2
DSS3040BB	3	4
DSS4040BB	4	4
DSS6060BB	6	6

Domestic Spool Adapters

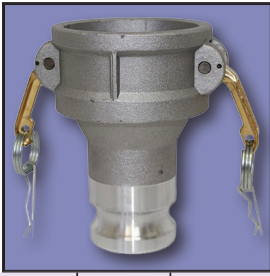


Part # (Aluminum)	Coupler Size	Coupler Size
DAL1010AA	1	1
DAL125AA	1 1/4	1 1/4
DAL150AA	1 1/2	1 1/2
DAL1520AA	1 1/2	2
DAL2020AA	2	2
DAL2030AA	2	3
DAL2040AA	2	4
DAL2530AA	2 1/2	3
DAL2540AA	2 1/2	4
DAL3030AA	3	3
DAL3040AA	3	4
DAL4040AA	4	4
DAL4050AA	4	5
DAL4060AA	4	6
DAL5050AA	5	5
DAL5060AA	5	6
DAL6060AA	6	6



Part # (Stainless Steel)	Coupler Size	Coupler Size
DSS1010AA	1	1
DSS125AA	1 1/4	1 1/4
DSS150AA	1 1/2	1 1/2
DSS1520AA	1 1/2	2
DSS2020AA	2	2
DSS2030AA	2	3
DSS2040AA	2	4
DSS2530AA	2 1/2	3
DSS2540AA	2 1/2	4
DSS3030AA	3	3
DSS4040AA	4	4
DSS4060AA	4	6
DSS5050AA	5	5
DSS6060AA	6	6

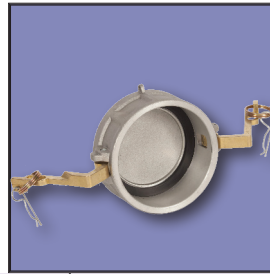
Domestic Reducing Couplers x Adapters



Coupler Size	Adapter Size	Aluminum
1	1 1/2	DAL1015BA
1 1/2	1	DAL1510BA
1 1/2	2	DAL1520BA
2	1	DAL2010BA
2	1 1/2	DAL2015BA
2	2 1/2	DAL2025BA
2	3	-
2	4	DAL2040BA
2 1/2	2	DAL2520BA
2 1/2	3	DAL2530BA
3	1 1/2	DAL3015BA
3	2	DAL3020BA
3	2 1/2	DAL3025BA
3	4	DAL3040BA
4	2	DAL4020BA
4	2 1/2	DAL4025BA
4	3	DAL4030BA
4	5	DAL4050BA
4	6	DAL4060BA
5	3	DAL5030BA
5	4	DAL5040BA
5	6	DAL5060BA
6	3	DAL6030BA
6	4	DAL6040BA
6	5	DAL6050BA
8	6	DAL8060BA

Coupler Size	Adapter Size	Stainless Steel
1	1 1/2	DSS1015BA
1 1/2	1	DSS1510BA
1 1/2	2	DSS1520BA
2	1	DSS2010BA
2	1 1/2	DSS2015BA
2	2 1/2	DSS2025BA
2	3	-
2	4	DSS2040BA
2 1/2	2	DSS2520BA
2 1/2	3	DSS2530BA
3	1 1/2	DSS3015BA
3	2	DSS3020BA
3	2 1/2	DSS3025BA
3	4	DSS3040BA
4	2	DSS4020BA
4	2 1/2	DSS4025BA
4	3	DSS4030BA
4	5	DSS4050BA
4	6	DSS4060BA
5	3	DSS5030BA
5	4	DSS5040BA
5	6	DSS5060BA
6	3	DSS6030BA
6	4	DSS6040BA
6	5	DSS6050BA
8	6	DSS8060BA

Domestic Lockable Dust Caps



Size	Part # (Aluminum)
2	DAL200DCL
3	DAL300DCL
4	DAL400DCL
6	DAL600DCL

Size	Part # (Stainless Steel)
2	DSS200DCL
3	DSS300DCL
4	DSS400DCL
6	DSS600DCL

Camlock & Groove Fittings

In-Line Sight Glass



Part #	Description
3544CA	4" Coupler x 4" Adapter
3533CA	3" Coupler x 3" Adapter
3543CA	4" Coupler x 3" Adapter
3534CA	3" Coupler x 4" Adapter
3533AA	3" Coupler x 3" Adapter

Part #	Description
3544AA	4" Adapter x 4" Adapter
3534AA	3" Adapter x 4" Adapter
3544CC	4" Coupler x 4" Coupler
3533CC	3" Coupler x 3" Coupler
3543CC	4" Coupler x 3" Coupler



NPT Fittings - KC Nipples

Aluminum NPT Ends

Size	Domestic Part #	Import Part #
2	DAST200	IAST200
2 1/2	DAST250	IAST250
3	DAST300	IAST300
4	DAST400	IAST400
5	DAST500	IAST500
6	DAST600	IAST600



Plated Steel NPT Ends

Size	Domestic Part #	Import Part #
2	DSTC200	ISTC200
2 1/2	DSTC250	ISTC250
3	DSTC300	ISTC300
4	DSTC400	ISTC400
5	DSTC500	ISTC500
6	DSTC600	ISTC600



Unplated Steel NPT Ends

Size	Domestic Part #	Import Part #
2	DST200	IST200
2 1/2	DST250	IST250
3	DST300	IST300
4	DST400	IST400
5	DST500	IST500
6	DST600	IST600



Carbon Steel NPT - Poly Sleeve

Size	Part #
4	IST400COATED

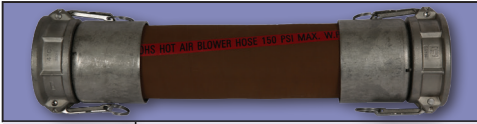
Custom made with polyethylene inner sleeves

- 3/8" Urethane wall on Barb end
- 1/2" Urethane wall on Thread end



Hose Assemblies

Hot Air Hose Assembly



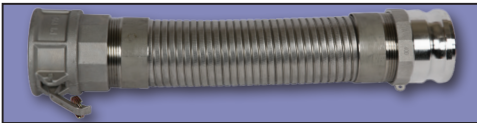
Part #	Description	Hose Diameter	Length
662-144-474	Rubber Hot Air Turbo Hose C/W Alum F x F	4"	12'
662-156-471	Rubber Hot Air Turbo Hose C/W Alum F x F, White Gasket Included	4"	13'
662-168-474	Rubber Hot Air Turbo Hose C/W Alum F x F	4"	14'

Discharge Hose Assembly



Part #	Description	Hose Diameter	Length
661-120-4166NT	BULKMASTER Softwall 3/16" Tube Transfer Hose Assy C/W Alum F x M Fittings	4"	10'
661-240-4166	BULKMASTER Softwall 3/16" Tube Transfer Hose Assy C/W Alum F x M Fittings	4"	20'

SS Food Turbo Hose Assembly



Part #	Description	Hose Diameter	Length
673-144-418	304SS Unlined MD .018 Metal Hose - Alum 4" D x 4"x3" 304SS Nipple / Thrd x Bore, with White Gasket	4"	12'
673-156-418	304SS Unlined MD .018 Metal Hose - Alum 4" D x 4"x3" 304SS Nipple / Thrd x Bore, with White Gasket	4"	13'
673-168-418	304SS Unlined MD .018 Metal Hose - Alum 4" D x 4"x3" 304SS Nipple / Thrd x Bore, with White Gasket	4"	14'

Food Grade Discharge Hose Assembly



Part #	Description	Hose Diameter	Length
631-144-4122ALDP	4" Boston Gray Dry Bulk Food Discharge Hose Assy - C/W PT C x C Alum Fittings with SS Arms Attached, White Gasket & Alum Dust Plugs	4"	12'
631-240-4122ALDP	4" Boston Gray Dry Bulk Food Discharge Hose Assy - C/W PT C x C Alum Fittings with SS Arms Attached, White Gasket & Alum Dust Plugs	4"	20'
631-264-31161	3" Grey Food Hose Assy - C/W SS Bevel Seat Fittings Crimped E/E CRN Certified	3"	22'
631-234-3153	3" x 19'-6" Goodyear Grey Food SUC/DIS Hose C/W SS Male x Female Camlock White Gasket - Crimped on each end Tested & Tagged	3"	19'-6"
631-240-2153OHS	2" x 20' Goodyear - OHS - Grey Food Hose ASSY C/W SS Male x Female Camlocks with White Gaskets - Crimped - Tested & Tagged	2"	20"

Chemical Hose Assembly



Part #	Description	For Hose Diameter	Length
622-240-223	2" x 20' OAL GDYR FABCHEM Hose C/W SS MxF Cam Lock Crimped - Tested & Tagged	2"	20'
622-240-323	2-1/2" x 20' OAL GDYR FABCHEM Hose C/W SS MxF Cam Lock Crimped - Tested & Tagged	2-1/2"	20'
622-234-923	3" x 20' OAL GDYR FABCHEM Hose C/W SS MxF Cam Lock Crimped - Tested & Tagged	3"	10'

Bulk Hose

Bulk Discharge Hose Bulk

Part #	Description	Hose Diameter
OHSDC400W0125	4IN OHS Cement Discharge Hose 1/8" Tube	4"
OHSDC400W0187	4IN OHS Cement Discharge Hose 3/16" Tube	4"
OHSDC400W025	4IN OHS Cement Discharge Hose 1/4" Tube	4"



PVC Hose Bulk

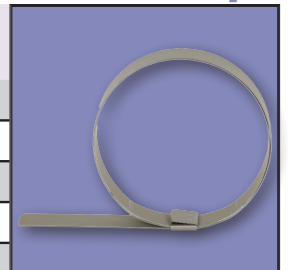
Part #	Description	Hose Diameter
CRT125	Clear Reinforced PVC Hose-FDA	1 1/4"
CRT150		1 1/2"
CRT200		2"



Clamps

Center Punch Clamps

Clamp I.D	Width (in.)	Thickness	Weight (lbs/pks)	Quantity	Galvanized	Stainless Steel
13/16	3/8	0.025	3.6	100	CP03	CP03S
1 3/8	3/8	0.025	4.6	100	CP311	CP311S
1	5/5	0.025	8.3	100	CP04	CP04S
1 1/4	5/5	0.025	8.7	100	CP05	CP05S
1 1/2	5/8	0.025	9.7	100	CP06	CP06S
1 3/4	5/8	0.025	10.6	100	CP07	CP07S
2	5/8	0.025	11.5	100	CP08	CP08S
2 1/4	5/8	0.025	12.6	100	CP09	CP09S
2 1/2	5/8	0.025	6.8	50	CP10	CP10S
2 3/4	5/8	0.025	7.3	50	CP11	CP11S
3	5/8	0.025	7.7	50	CP12	CP12S
3 1/2	5/8	0.025	8.7	50	CP14	CP14S
4	5/8	0.025	4.9	25	CP16	CP16S
4 1/2	5/8	0.025	5.5	25	CP18	CP18S
5	5/8	0.025	5.9	25	CP20	CP20S
6	5/8	0.025	6.8	25	CP24	CP24S
7	5/8	0.025	7.4	25	CP28	CP28S
8	5/8	0.025	8.2	25	CP32	CP32S



Bulk Hose / Clamps

Gear Clamps



Size Closed (in.)	Size Open (in.)	Carbon steel	Stainless Steel
3/8	7/8	HS6	HAS6
7/16	1	HS8	HAS8
9/16	1 1/16	HS10	HAS10
9/16	1 1/4	HS12	HAS12
11/16	1 1/2	HS16	HAS16
3/4	1 3/4	HS20	HAS20
1 1/16	2	HS24	HAS24
1 5/16	2 1/4	HS28	HAS28
1 9/16	2 1/2	HS62	HAS62
1 13/16	2 3/4	HS36	HAS36
2 1/16	3	HS40	HAS40
2 5/16	3 1/4	HS44	HAS44
2 9/16	3 1/2	HS48	HAS48
2 13/16	3 3/4	HS52	HAS52
3 1/16	4	HS56	HAS56
3 5/16	4 1/4	HS60	HAS60
2 1/2	4 1/2	HS64	HAS64
3	5	HS72	HAS72
3 1/2	5 1/2	HS80	HAS80
3 3/4	5 3/4	HS84	HAS84
4	6	HS88	HAS88
4 1/2	6 1/2	HS96	HAS96
5	7	HS104	HAS104

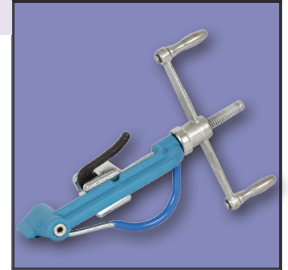
Center Punch Tool

Part #
C001



Banding Tool

Part #
P1000



201 Stainless Steel Banding



Width (in.)	Thickness (in.)	Weight (lbs/ft)	Length	Part #
1/4	0.020	0.017	100	C202
3/8	0.025	0.032	100	C203
1/2	0.030	0.051	100	C204
5/8	0.030	0.064	100	C205
3/4	0.030	0.077	100	C206

Galvanized Carbon Steel Banding



Width (in.)	Thickness (in.)	Weight (lbs/ft)	Length	Part #
3/8	0.025	0.033	100	C303
1/2	0.030	0.051	100	C304
5/8	0.030	0.064	100	C305
3/4	0.030	0.077	100	C306

Stainless Steel Buckles



Width (in.)	Weight (lbs/ft)	Length	Part #
3/8	0.008	100	C253
1/2	0.021	100	C254
5/8	0.024	100	C255
3/4	0.037	100	C256

Steel Buckles

Width (in.)	Weight (lbs/ft)	Length	Part #
3/8	0.004	100	C353
1/2	0.010	100	C354
5/8	0.011	100	C355
3/4	0.017	100	C356

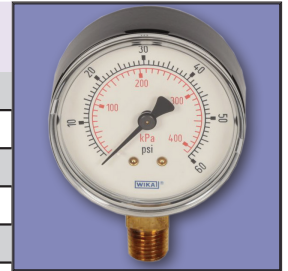


BAND-IT[®]
THE CLAMPING EXPERTS

Gauges

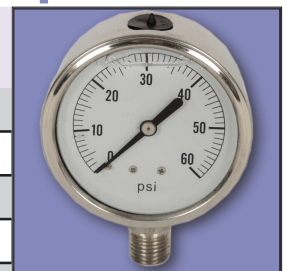
General Service - Dry

Part #	Size (in.)	Case	Wetted Parts	Window	Pressure Range
11110G05P25	2 1/2	Black ABS Plastic	Copper Alloy	Snap-in Acrylic	0-5 psi
11110G015P25	2 1/2	Black ABS Plastic	Copper Alloy	Snap-in Acrylic	0-15psi
11110G060P25	2 1/2	Black ABS Plastic	Copper Alloy	Snap-in Acrylic	0-60psi
11110G030P4	4	Black ABS Plastic	Copper Alloy	Snap-in Acrylic	0-30psi
23253G015P25	2 1/2	Stainless Steel	316 Stainless Steel	Polycarbonate	0-15psi
23253G0160P25	2 1/2	Stainless Steel	316 Stainless Steel	Polycarbonate	0-160psi
23254G060P4	4	Stainless Steel	Copper Alloy	Instrument Glass	0-60psi
23254G0100P4	4	Stainless Steel	Copper Alloy	Instrument Glass	0-100psi



General Service - Liquid Filled

Part #	Size (in.)	Internals	Wetted Parts	Window	Pressure Range
21353G015P25	2 1/2	Brass	Copper Alloy	Polycarbonate	0-15psi
21353G030P25	2 1/2				0-30psi
21353G060P25	2 1/2				0-60psi
21353G0100P25	2 1/2				0-100psi
21353G0160P25	2 1/2				0-160psi
21353G05000P25	2 1/2				0-5000psi
21353G030P4	4				0-30psi
21353G0100P4	4				0-100psi
23353G015P25	2 1/2	Steel	316 Stainless Steel	Acrylic	0-15psi
23353G030P25	2 1/2				0-30psi
23353G060P25	2 1/2				0-60psi
23353G0100P25	2 1/2				0-100psi
23353G0160P25	2 1/2				0-160psi
23353G0200P25	2 1/2				0-200psi
23353G0300P25	2 1/2				0-300psi
23353G0400P25	2 1/2				0-400psi
23353G0600P25	2 1/2				0-600psi
23353G03000P25	2 1/2				0-3000psi
23353G0300P4	4				0-300psi



Gauges



Safety Equipment & Accessories

Heavy Duty Absorbent Pads



Part #	Colour	Volume	Type of Spill
WPH100	White	12oz	Oil
BBPZ	Blue	12oz	Oil
OSU170	Yellow	12oz	Chemical

- 17" x 19"
- No Link
- 100/Bale

Light Weight Absorbent Pads



Part #	Colour	Volume	Type of Spill
WPH200	White	6oz	Oil
11470	Blue	9oz	Oil
OSU120	Yellow	9oz	Chemical

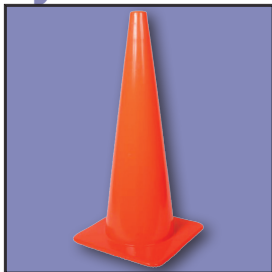
- 17" x 19"
- No Link
- 100/Bale

Cam Arm Tie Down Velcro Straps



Part #	Size
VLS1501800	18" long x 1 1/2"
VLS1503000	30" long x 1 1/2"

Pylons



Part #
PYL18
PYL28-32281
PYL28-32281RC
PYL36

Emergency Spill Kit



Part #	Types of Spill
MSK6	Oil
MSKCH6	Chemical

- Oil or Chemical Specific 17" x 19" Absorbent Pads (10 each)
- Oil or Chemical Specific 3" x 48" Absorbent Socks (4 each)
- 36" x 36" x 1 1/16" Drain Cover (1 each)
- 40" x 60" Disposal Bag (1 each)

Changeable Digit-Flip

Part #
DFP58632



For the ultimate in convenience, flexibility and time saving, Duo-Flip allows you to change both DOT placard legends and ID numbers in seconds to match your commodity. This Duo-Flip 8-Legend Flip Placard System includes 9 placard panels in a single full frame:

- Inhalation Hazard 2
- Flammable Liquid 3
- Combustible 3
- Oxidizer 5.1
- Inhalation Hazard 6
- Poison 6
- Corrosive 8
- Miscellaneous 9
- Blank

Choose Your Hose Tags



Part #
IDSSTOHB
2-Slot Metal Tag



Part #
IDSSTOHBTRI
4-Slot Metal Tag



Part #
IDSSTOHBK
2-Slot Black Metal Tag



Part #
LASABLE2X3
Black Sticker Tag

HOSETRACKER

Hosetracker – Proprietary software developed by Ontario Hose to track and record hoses all on the web

Hose Identification

- All Hoses are labeled with a pneumatically stamped stainless steel identification tag containing hose number, company name, PSI of test, date of test, and the next due test.
- Tags are secured to the hose using two stainless steel attaching bands
- In addition, hose ID and manufacture date are stamped under each cam arm for both drop hoses and chemical hoses

Information Tracked:

- Company Name
- Hose Number
- Type of Hose
- Diameter of Length of Hose
- Fittings
- Unit Number (trailer number, etc...)
- Location (Branch Location)
- Hydro Test Date
- Static Test Date
- Pressure of Hydro Test
- Service Status (in service, stock, etc...)
- Service Date
- PO and Invoice Number
- Previous Hose Number (if applicable)
- Date and User who made entry

ONTARIO HOSE SPECIALTIES LIMITED



Spécialité Boyaux Québec
Quebec Hose Specialties



Maritime Hose
Specialties

2021 CATALOGUE

HEAD OFFICE

7245 Pacific Circle, Mississauga, ON L5T 1V1
Tel: 905-670-0113 Fax: 905-670-4958
Toll Free 1-877-668-4673

SARNIA

480 Polymoore Drive, Sarnia, ON N0N 1G0
Tel: 519-336-8541 Fax: 519-336-8543
Toll Free 1-866-336-8541

STONEY CREEK

333 Green Rd - Unit #1, Stoney Creek, ON L8E 2B1
Tel: 905-662-0276 Fax: 905-662-0542

KINGSTON BRANCH

639 Justus Drive, Kingston, ON K7M 4H5
Tel: 613-549-7316 Fax: 613-549-6214

QUEBEC

1900 Hymus Blvd, Dorval, Quebec H9P 1J7
Tel: 514-685-1266 Fax: 514-685-1606

ATLANTIC

10 Akerley Blvd - Unit #28, Dartmouth, NS B3B 1J4
Tel: 902-465-5220 Fax: 902-466-5296

CURRENT CERTIFICATIONS

ISO 9001:2008

TSSA

NAHAD

CSA

RMA

PEI

CRN

CCHD

AERATION
SYSTEMS

FILTERS

CAMLOCK
FITTINGS

WWW.ONTARIOHOSE.COM 1-877-668-4673

WEBSTORE@ONTARIOHOSE.COM